



GAT MONTHLY MEMBERSHIP PROGRESS REPORT

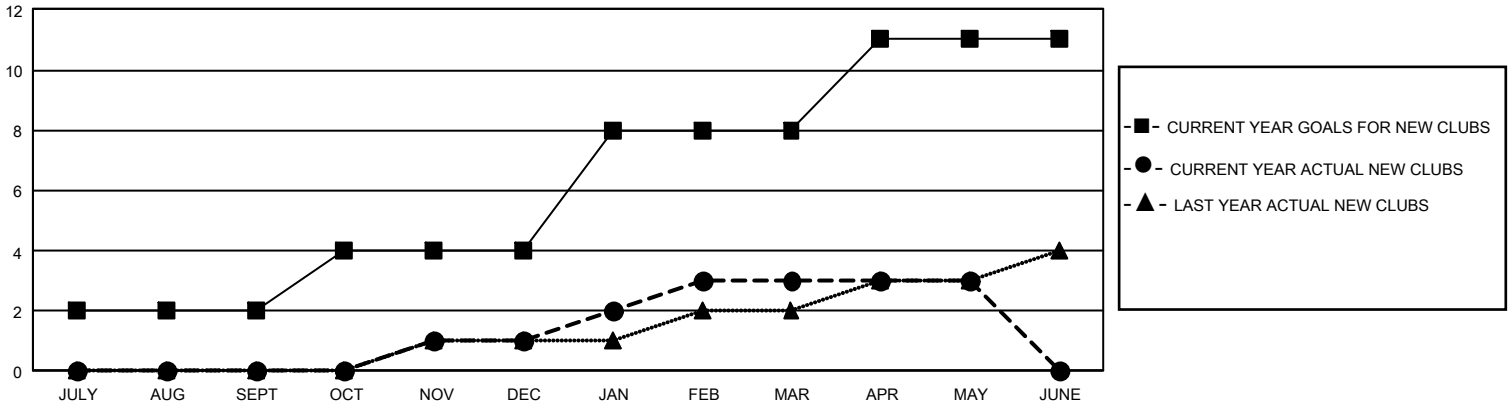
Results as of: 5/31/2023

GMT Constitutional Area 5 - J, Group J

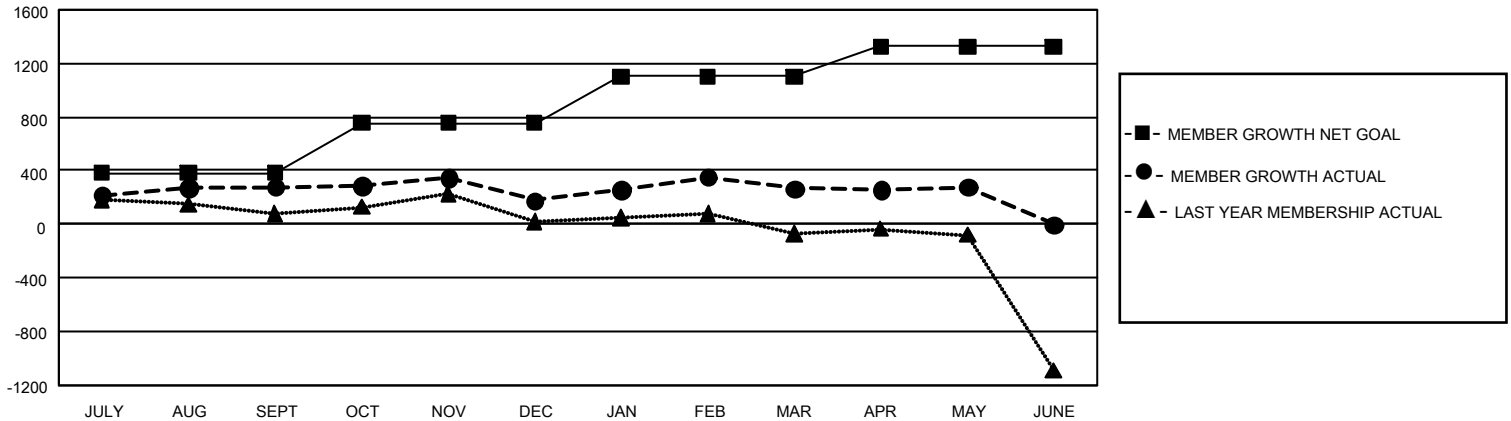
REPORT DOES NOT INCLUDE CLUBS IN UNDISTRICTED AREAS.

Clubs				Members			
RESULTS FOR 2022-2023				RESULTS FOR 2022-2023			
QUARTER	NEW CLUB GOAL	NEW CLUBS	DROPPED CLUBS	QUARTER	MEMBER GROWTH NET GOAL	MEMBER GROWTH ACTUAL	DROPPED MEMBERS ACTUAL (including transfers)
JULY/AUG/SEPT	6	0	1	JULY/AUG/SEPT	381	800	471
OCT/NOV/DEC	6	1	0	OCT/NOV/DEC	375	360	453
JAN/FEB/MAR	12	2	0	JAN/FEB/MAR	345	565	447
APR/MAY/JUNE	9	0	0	APR/MAY/JUNE	225	315	287

GOALS AND ACTUAL NEW CLUBS CUMULATIVE



GOALS AND ACTUAL MEMBERS CUMULATIVE



DROPPED CLUBS: 1	565 CLUBS OF 757 ADDED 1 OR MORE NEW MEMBERS	<u>GENDER DISTRIBUTION</u>	
<u>DROPPED MEMBERS</u>		MALE	21,281 (78.69%)
DECEASED	201	FEMALE	5,757 (21.29%)
CLUB CANCELLED	0	NON BINARY	0 (0.00%)
OTHER	1,457	PREFER NOT TO ANSWER	6 (0.02%)
TOTAL	1,658	TOTAL FAMILY UNIT MEMBERS	7,097
	CLICK HERE FOR CUMULATIVE MEMBERSHIP DATA	FAMILY MEMBERS PAYING HALF DUES	3,882